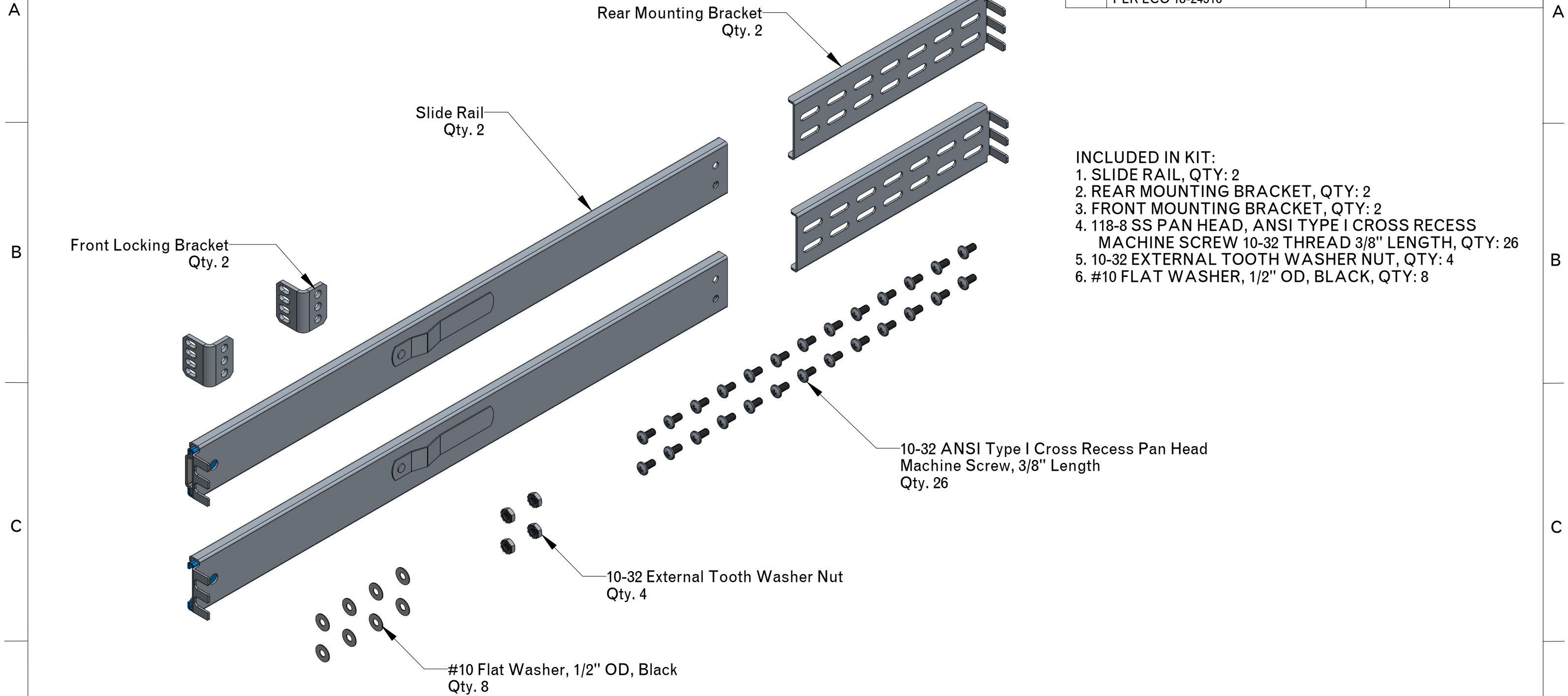


# Kit Contents

REVISIONS			
REV	DESCRIPTION	DATE	APPROVED
A	INITIAL RELEASE PER ECO 18-23910	6/27/18	K.DUBROWN
B	RENAME TO SHELTER GRADE UPS PER ECO 18-24516	11/08/18	K.DUBROWN



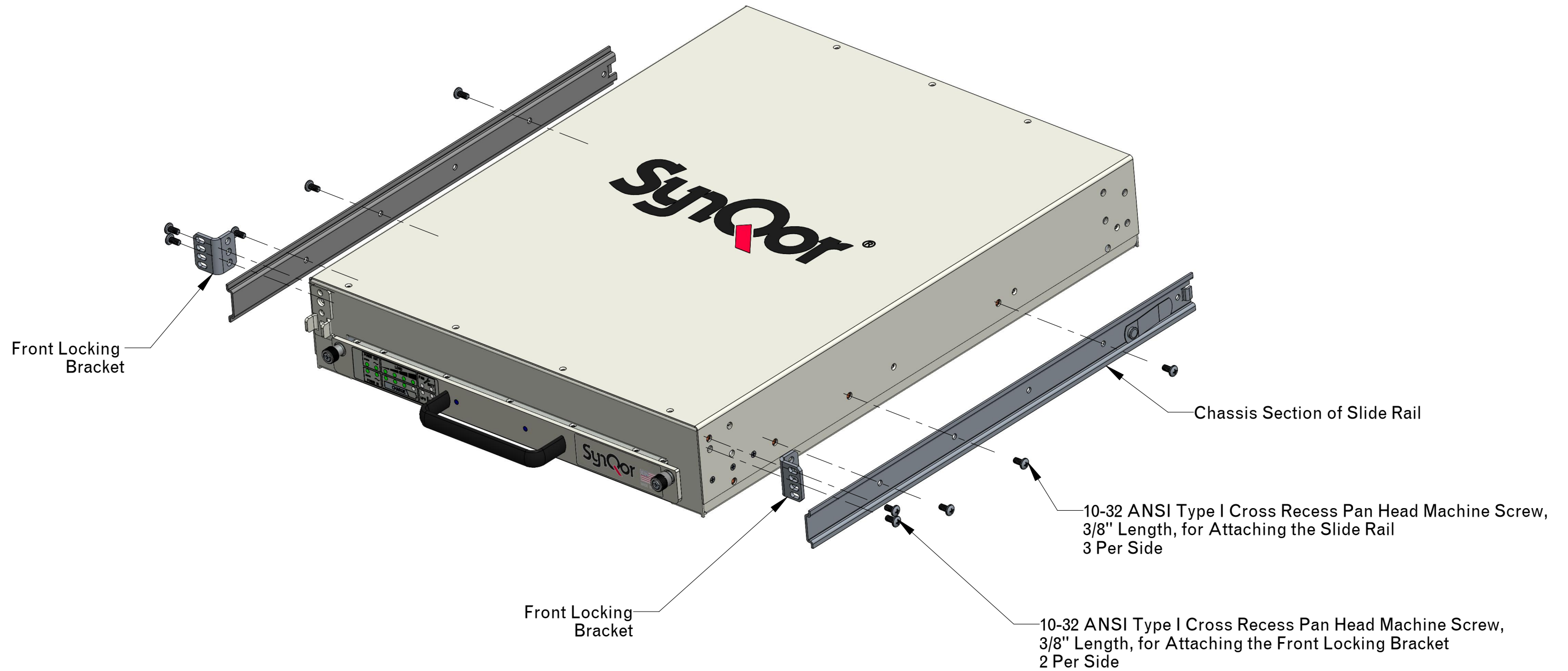
- INCLUDED IN KIT:**
1. SLIDE RAIL, QTY: 2
  2. REAR MOUNTING BRACKET, QTY: 2
  3. FRONT MOUNTING BRACKET, QTY: 2
  4. 118-8 SS PAN HEAD, ANSI TYPE I CROSS RECESS MACHINE SCREW 10-32 THREAD 3/8" LENGTH, QTY: 26
  5. 10-32 EXTERNAL TOOTH WASHER NUT, QTY: 4
  6. #10 FLAT WASHER, 1/2" OD, BLACK, QTY: 8

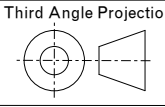

**NOTES:**

- 1-1: KIT DESIGNED FOR COMPATIBILITY WITH EIA/ECA-310 19 INCH RACKS WITH UNIVERSAL SPACING. KIT ALSO COMPATIBLE WITH IEC 60297-3-100 482.6 mm (19 in) SERIES RACKS TYPE II.
- 1-2: USE 30 in-lb TORQUE FOR ALL HARDWARE INSTALLATION
- 1-3: REFERENCE SYNQOR SPECIFICATIONS: 554-1000021, 554-1000031
- 1-4: WEIGHT: 4.5 lbs

<p><b>TOLERANCES:</b>                  Unless otherwise specified:                  All dimensions in inches                  .X +/- .025                  .XX +/- .010                  .XXX +/- .005                  Angles +/- 1°</p> <p>Third Angle Projection</p>	<p><b>SynQor</b> 155 Swanson Road                  Boxborough, MA 01719-1316</p>			
	<p><b>SHELTER GRADE UPS                  SLIDE RAIL MOUNT KIT (24" DEPTH)</b></p> <p>SOURCE: PRO/E COTS SYN_DRAWING_STEP1</p>			
<p>THIS DRAWING IS THE PROPERTY OF SYNQOR LLC. It is not to be reproduced or copied, in whole or in part, or used for furnishing information to others, or for any purpose detrimental to the interests of SynQor. The information shown herein may be protected by patents owned or controlled by SynQor.</p>	<p>SIZE <b>B</b></p>	<p>DATE <b>NOV-08-18</b></p>	<p>DWG. NO. <b>SYN-9053</b></p>	<p>REV <b>B</b></p>
<p>SCALE: 0.400</p>		<p>DRAWN: KJD</p>	<p>CHECK:</p>	<p>SHEET 1 of 7</p>

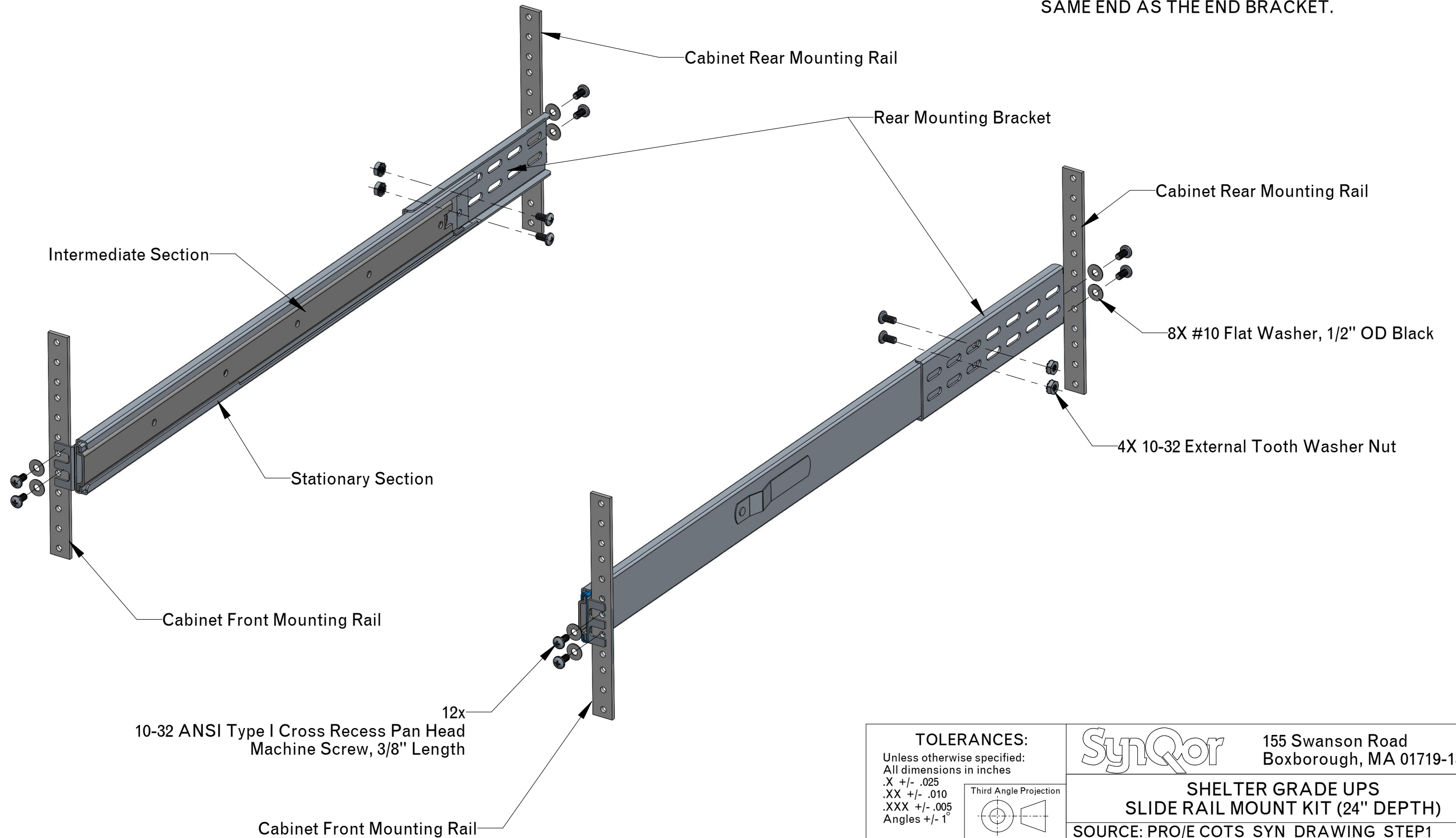
# Rail- Chassis Mounting Diagram



<p><b>TOLERANCES:</b>                  Unless otherwise specified:                  All dimensions in inches                  .X +/- .025                  .XX +/- .010                  .XXX +/- .005                  Angles +/- 1°</p> <p>Third Angle Projection</p>  <p>THIS DRAWING IS THE PROPERTY OF SYNQOR LLC.                  It is not to be reproduced or copied, in whole or in part, or used for furnishing information to others, or for any purpose detrimental to the interests of SynQor. The information shown herein may be protected by patents owned or controlled by SynQor.</p>			155 Swanson Road Boxborough, MA 01719-1316	
	<p><b>SHELTER GRADE UPS                  SLIDE RAIL MOUNT KIT (24" DEPTH)</b></p>			
	<p>SOURCE: PRO/E COTS SYN_DRAWING_STEP1</p>			
	SIZE <b>B</b>	DATE <b>NOV-08-18</b>	DWG. NO. <b>SYN-9053</b>	REV <b>B</b>
SCALE: 0.143		DRAWN: KJD	CHECK:	SHEET 2 of 7

# Rail - Rack Mounting Diagram

**NOTE:**  
 3-1: INSERT THE INTERMEDIATE SECTION INTO THE STATIONARY RAIL PRIOR TO INSTALLATION OF THE REAR BRACKET.  
 3-2: INTERMEDIATE SECTION IS INSTALLED FROM THE SAME END AS THE END BRACKET.



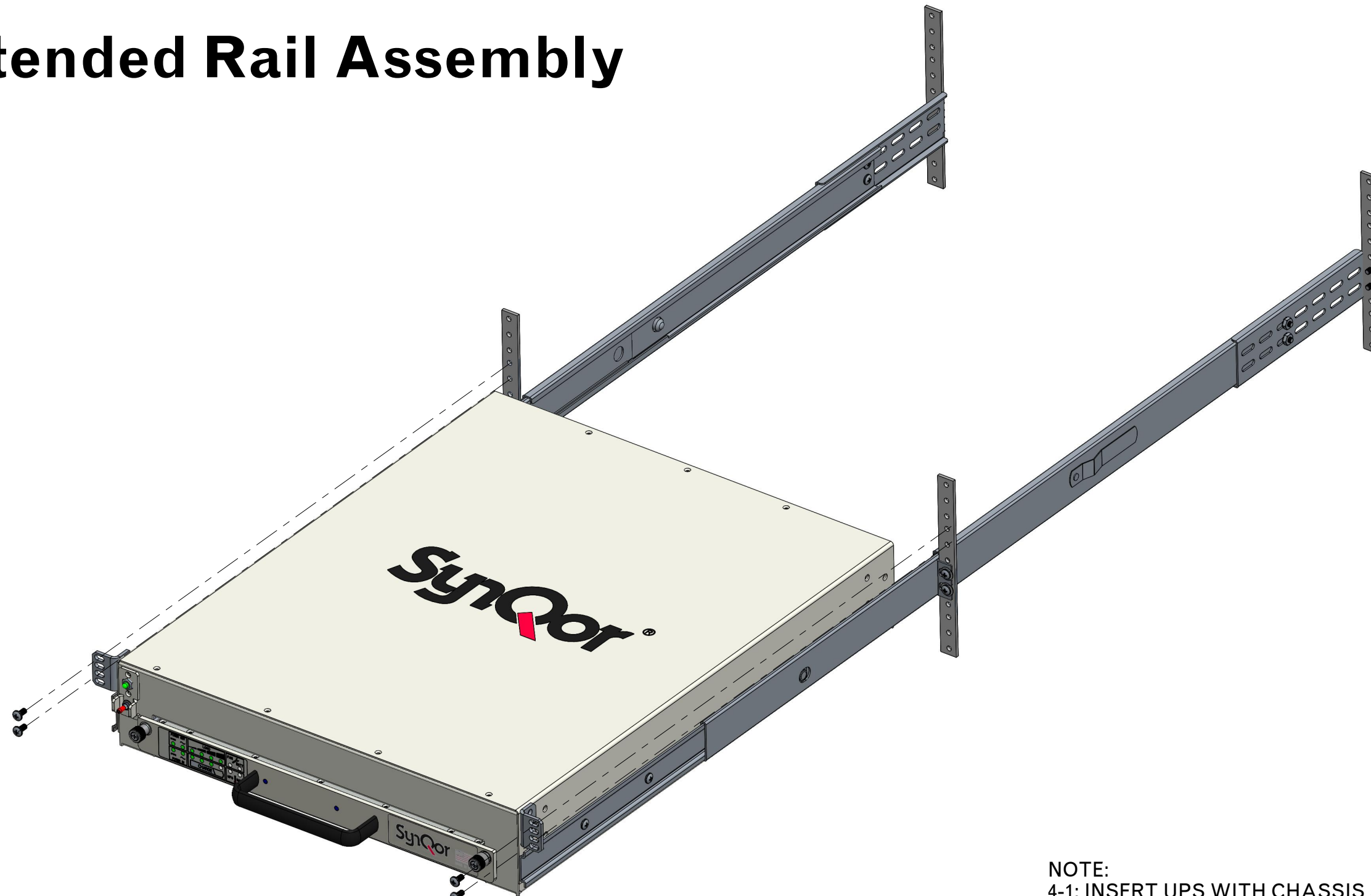
**TOLERANCES:**  
 Unless otherwise specified:  
 All dimensions in inches  
 .X +/- .025  
 .XX +/- .010  
 .XXX +/- .005  
 Angles +/- 1°

Third Angle Projection

THIS DRAWING IS THE PROPERTY OF SYNQOR LLC. It is not to be reproduced or copied, in whole or in part, or used for furnishing information to others, or for any purpose detrimental to the interests of SynQor. The information shown herein may be protected by patents owned or controlled by SynQor.

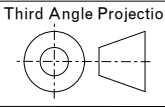

		155 Swanson Road Boxborough, MA 01719-1316	
		<b>SHELTER GRADE UPS                  SLIDE RAIL MOUNT KIT (24" DEPTH)</b>	
SOURCE: PRO/E COTS_SYN_DRAWING_STEP1			
SIZE	DATE	DWG. NO.	REV
<b>B</b>	<b>NOV-08-18</b>	<b>SYN-9053</b>	<b>B</b>
SCALE: 0.350	DRAWN: KJD	CHECK:	SHEET 3 of 7

# Extended Rail Assembly

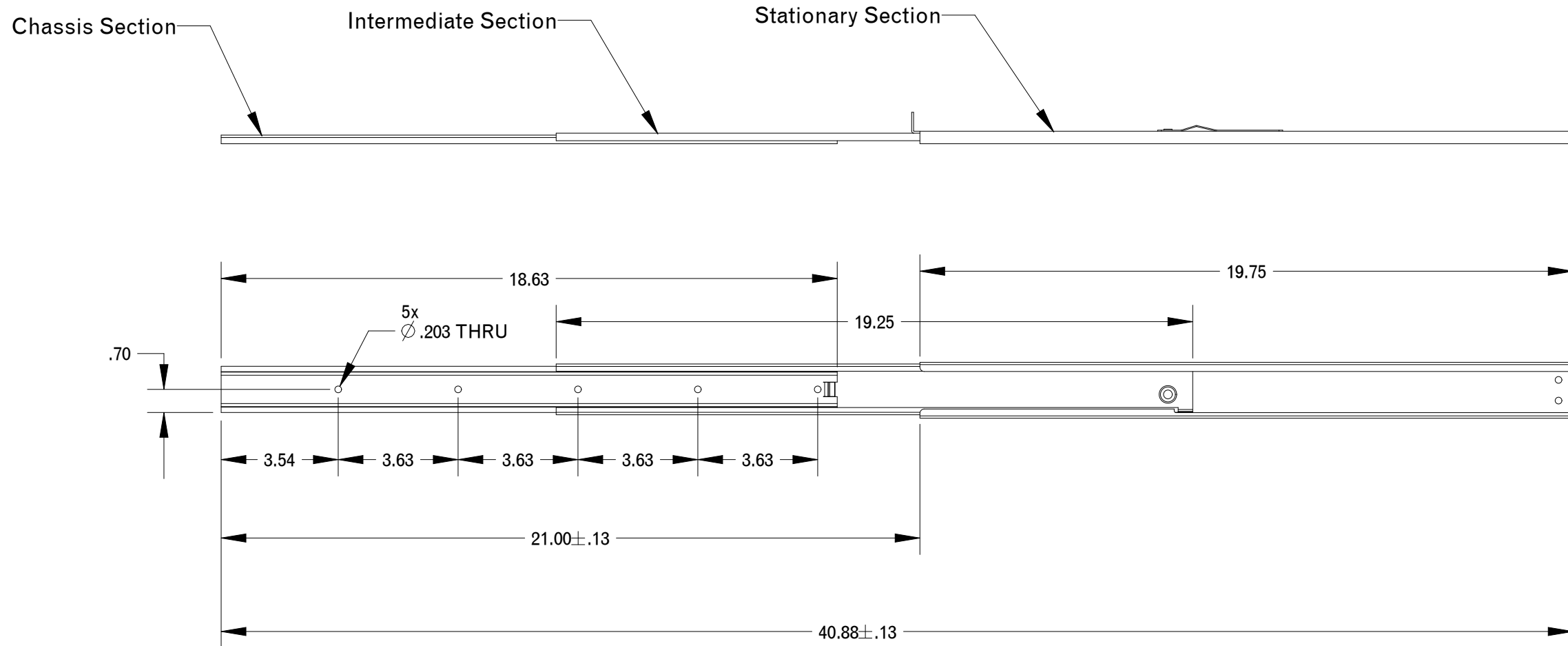


4x  
10-32 ANSI Type I Cross Recess Pan Head  
Machine Screw, 3/8" Length

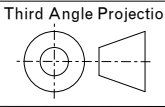

**NOTE:**  
4-1: INSERT UPS WITH CHASSIS SECTION ATTACHED  
INTO THE FRONT SIDE OF THE INTERMEDIATE SECTION.

<b>TOLERANCES:</b> Unless otherwise specified: All dimensions in inches .X +/- .025 .XX +/- .010 .XXX +/- .005 Angles +/- 1°					155 Swanson Road Boxborough, MA 01719-1316	
	SHELLER GRADE UPS SLIDE RAIL MOUNT KIT (24" DEPTH)				SOURCE: PRO/E COTS_SYN_DRAWING_STEP2	
THIS DRAWING IS THE PROPERTY OF SYNQOR LLC. It is not to be reproduced or copied, in whole or in part, or used for furnishing information to others, or for any purpose detrimental to the interests of SynQor. The information shown herein may be protected by patents owned or controlled by SynQor.		SIZE <b>B</b>	DATE <b>NOV-08-18</b>	DWG. NO. <b>SYN-9053</b>	REV <b>B</b>	
SCALE: 0.25		DRAWN: KJD	CHECK:	SHEET 4 of 7		

# Slide Rail Details



**NOTES:**  
 5-1: ALL SLIDING MEMBERS OF STANDARD SLIDE ARE MADE OF COLD ROLLED STEEL  
 5-2: WEIGHT CAPACITY OF THE RAIL IS 85 lbs

<b>TOLERANCES:</b> Unless otherwise specified: All dimensions in inches .X +/- .025 .XX +/- .010 .XXX +/- .005 Angles +/- 1°						155 Swanson Road Boxborough, MA 01719-1316	
THIS DRAWING IS THE PROPERTY OF SYNQOR LLC. It is not to be reproduced or copied, in whole or in part, or used for furnishing information to others, or for any purpose detrimental to the interests of SynQor. The information shown herein may be protected by patents owned or controlled by SynQor.				<b>SHELTER GRADE UPS          SLIDE RAIL MOUNT KIT (24" DEPTH)</b>			
SOURCE: PRO/E COTS_SYN_DRAWING_STEP3							
SIZE	DATE	DWG. NO.		REV			
<b>B</b>	<b>NOV-08-18</b>	<b>SYN-9053</b>		<b>B</b>			
SCALE: 0.250		DRAWN: KJD		CHECK:		SHEET 5 of 7	



1

2

3

4

A

A

B

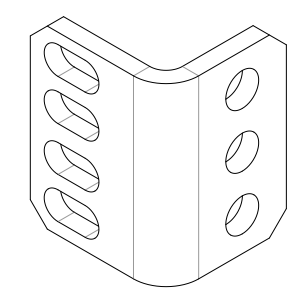
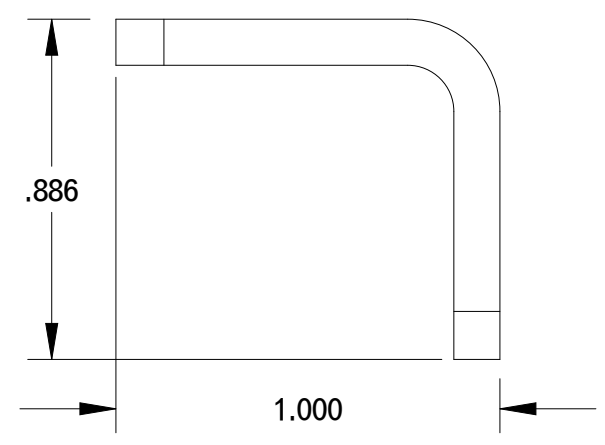
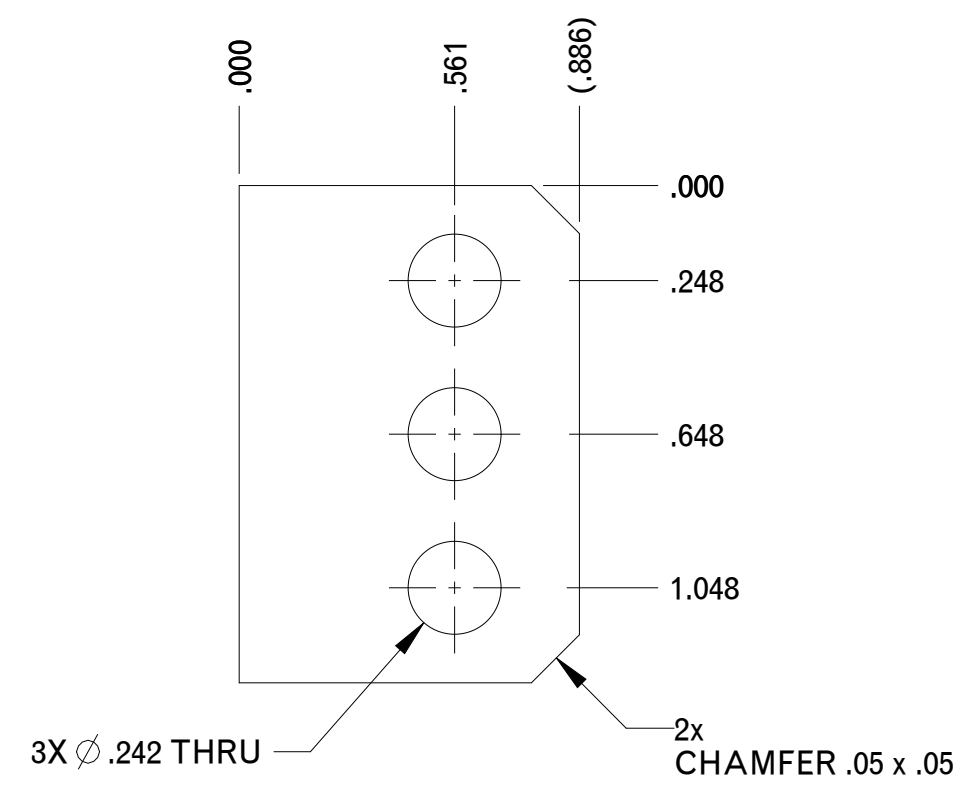
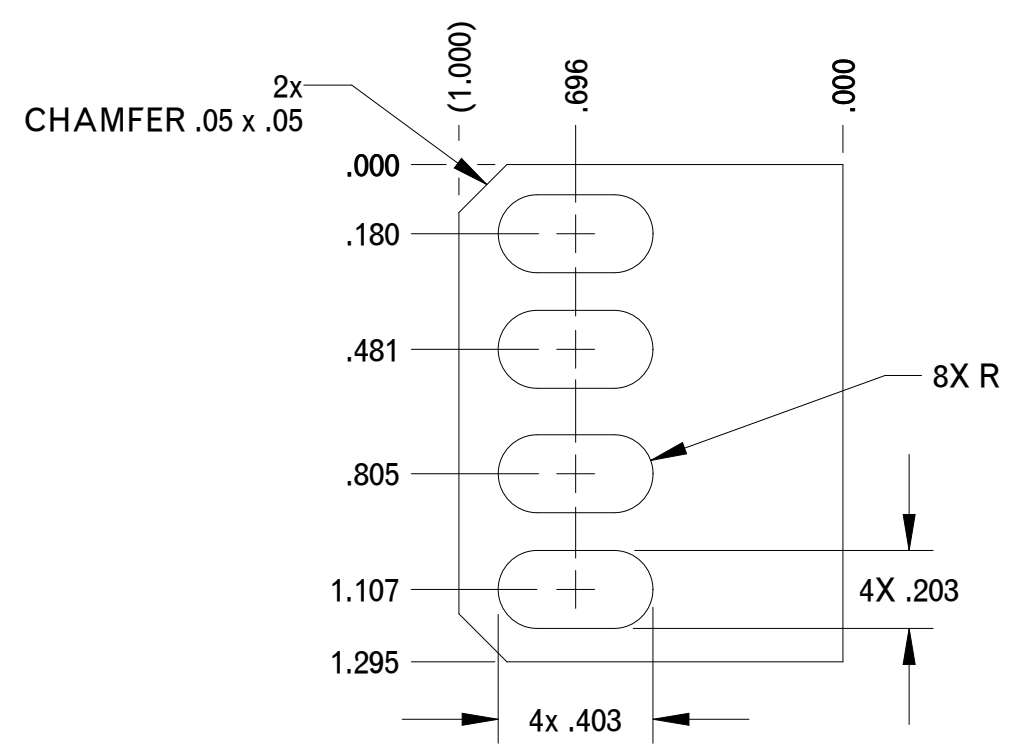
B

C

C

D

D



SCALE: 1.000

NOTES:  
 6-1: MATERIAL: ANSI 1080 COLD ROLL STEEL  
 6-2: FINISH: ZINC AND CLEAR CHROMATE

**TOLERANCES:**  
 Unless otherwise specified:  
 All dimensions in inches  
 .X +/- .025  
 .XX +/- .010  
 .XXX +/- .005  
 Angles +/- 1°

Third Angle Projection

THIS DRAWING IS THE PROPERTY OF SYNQOR LLC. It is not to be reproduced or copied, in whole or in part, or used for furnishing information to others, or for any purpose detrimental to the interests of SynQor. The information shown herein may be protected by patents owned or controlled by SynQor.

		155 Swanson Road Boxborough, MA 01719-1316	
<b>SHELTER GRADE UPS SLIDE RAIL MOUNT KIT (24" DEPTH)</b>			
SOURCE: PRO/E COTS_SYN_DRAWING_STEP4			
SIZE	DATE	DWG. NO.	REV
<b>B</b>	<b>NOV-08-18</b>	<b>SYN-9053</b>	<b>B</b>
SCALE: 2.000	DRAWN: KJD	CHECK:	SHEET 6 of 7

1

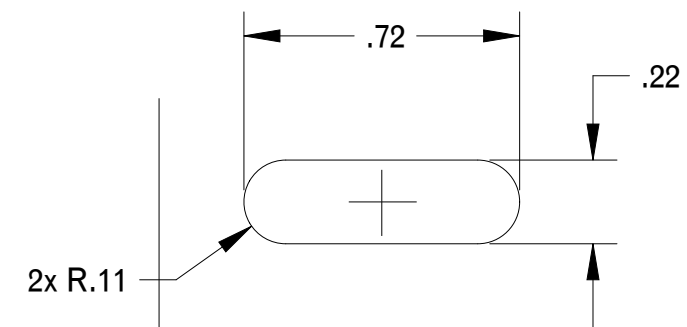
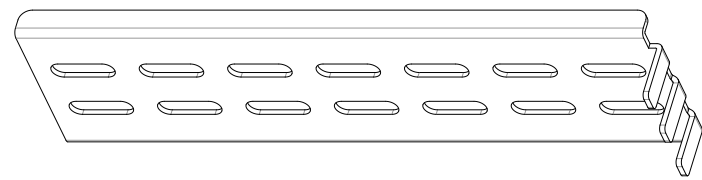
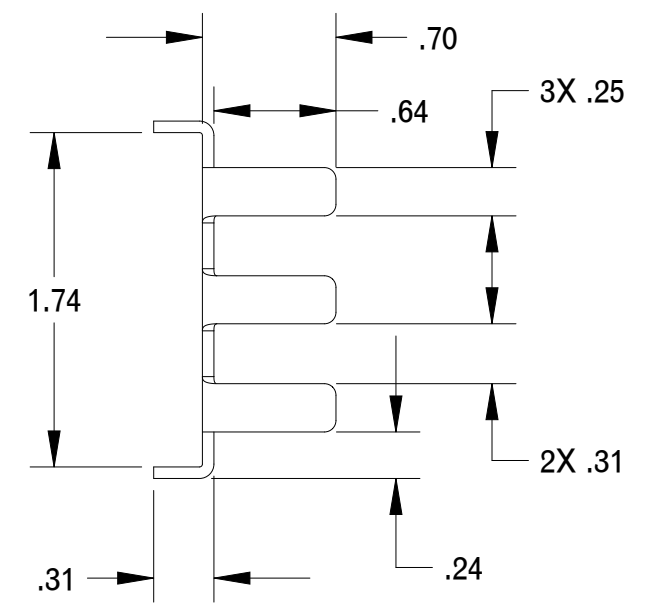
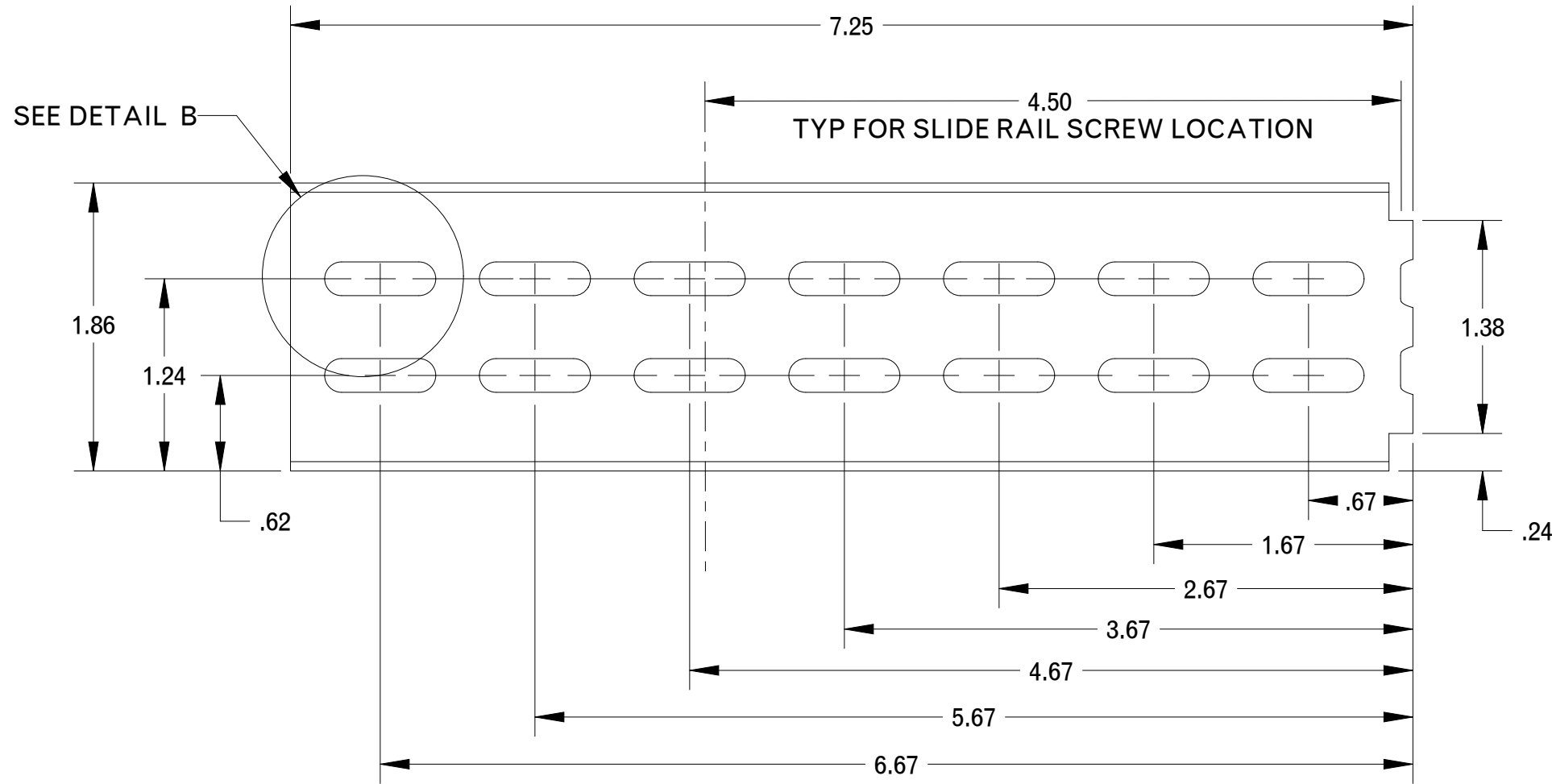
2

3

4

1 2 3 4

A A



DETAIL B  
SCALE 2.00

NOTES:  
7-1: MATERIAL: COLD ROLLED STEEL  
7-2: FINISH: ZINC PLATED

**TOLERANCES:**  
Unless otherwise specified:  
All dimensions in inches  
.X +/- .025  
.XX +/- .010  
.XXX +/- .005  
Angles +/- 1°

Third Angle Projection

THIS DRAWING IS THE PROPERTY OF SYNQOR LLC. It is not to be reproduced or copied, in whole or in part, or used for furnishing information to others, or for any purpose detrimental to the interests of SynQor. The information shown herein may be protected by patents owned or controlled by SynQor.

		155 Swanson Road Boxborough, MA 01719-1316	
<b>SHELTER GRADE UPS SLIDE RAIL MOUNT KIT (24" DEPTH)</b>			
SOURCE: PRO/E 554-1000021			
SIZE	DATE	DWG. NO.	REV
<b>B</b>	<b>NOV-08-18</b>	<b>SYN-9053</b>	<b>B</b>
SCALE: 1.000	DRAWN: KJD	CHECK:	SHEET 7 of 7

C C

D D

1 2 3 4